

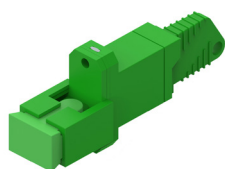
PRODUCT DESCRIPTION

- High reliability and precision alignment;
- Easy to use;
- Can be widely used for FTTx, passive optical network (OPN) and cable TV network (CATV);
- Low Insertion loss and return loss;
- Good repeatability, changeability and temperature stabilization;
- Include dust protections caps;
- Allow fitting in the bulkheads patch panel either with a nut or with clips.

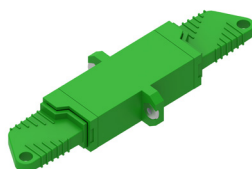


• STANDARDS

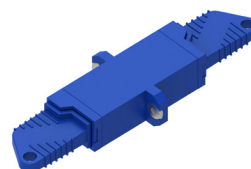
• ISO/IEC 11801; EN 50173-1; IEC 61754-1; IEC 61753-1; IEC 61300.



**E2000/APC - SC/APC
SIMPLEX**



E2000/APC SIMPLEX



E2000 SIMPLEX

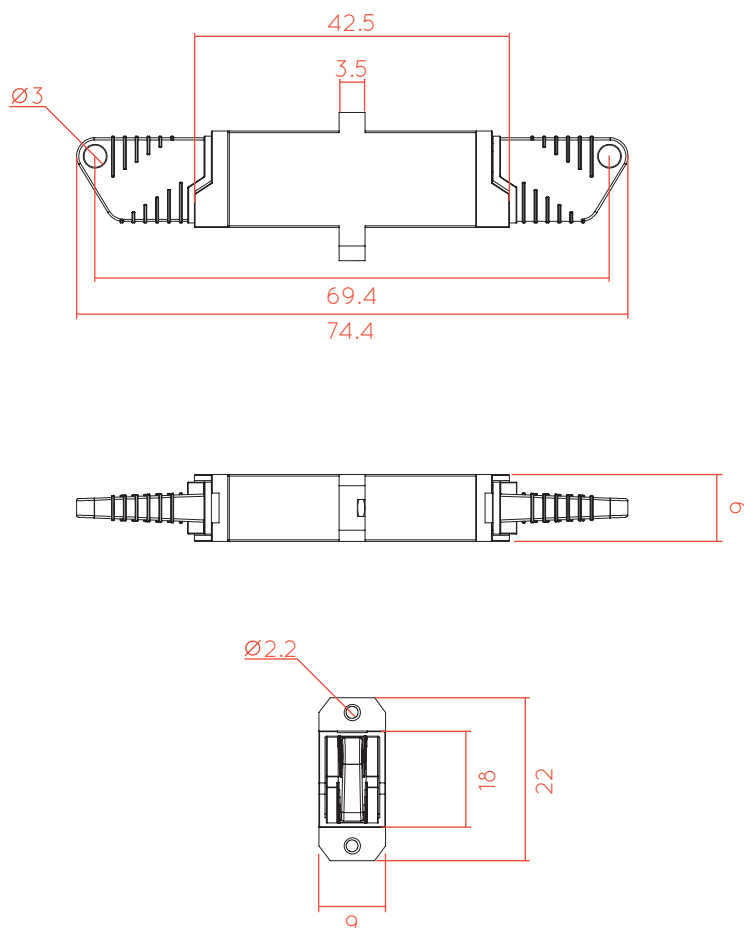
• OPERATING PERFORMANCE

	SINGLEMODE	
	UPC	APC
Insertion Loss (dB)	< 0.3	< 0.3
Durability (500 Mating) (dB)	< 0.2	< 0.2
Operation Temperature (°C)	-40 to 85	-40 to 85
Retention Force (N)	200-600	200-600
Housing Material	PEI	PEI
Mounting Style	Screws	Screws
Sleeve Material	Ceramics (Grade A)	Ceramics (Grade A)
Colour	Blue	Green

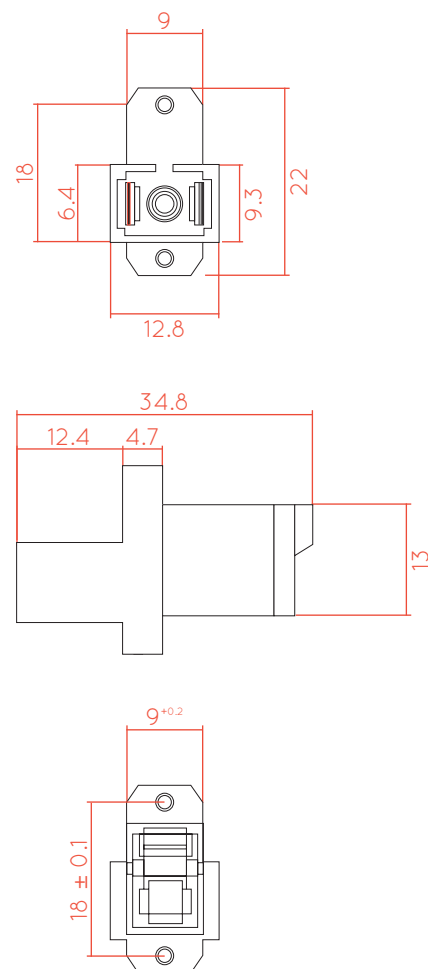
• ORDER INFORMATION						
Code	Description	Conector	Category	Simplex/Duplex	Color	Quantity (un)
81411071050	Adapter OS2 E2000/APC Simplex	E2000/APC	OS2	Simplex	Green	1
81411081040	Adapter OS2 E2000 Simplex	E2000	OS2	Simplex	Blue	1
81411101050	Adapter OS2 E2000/APC-SC/APC Simplex	E2000/APC-SC/APC	OS2	Simplex	Green	1

TECHNICAL DRAWING (mm)

E2000/APC Simplex | E2000 Simplex:



E2000/APC - SC/APC Simplex:



As part of our goal to achieve quality excellence, our barpa System Warranty can give you 25 years products and solution assurance of compliance with the industry performance standard comparing with the class installed. This warranty applies to network infrastructure installations that was made by an approved barpa Partner using an barpa solution (end-to-end). For more informations go to our website.