

RP-PEG08-H

8-P Gigabit Ethernet PoE+ Switch

RP-PEG08-H series is an 8-port Gigabit high power (IEEE 802.3at) PoE Switch utilizing a compact form factor which can be mounted in a 19-inch rack with optional rack-mounting kits or placed on desktop.

With data and power supported by one unit, RP-PEG08-H series reduces cables and eliminates the need for dedicated electrical outlets on the wall, ceiling or any unreachable place.

Auto PoE detection, Plug and play installation , and LED indicators showing its working condition, make RP-PEG08-H series Gigabit PoE Switch easy to use.



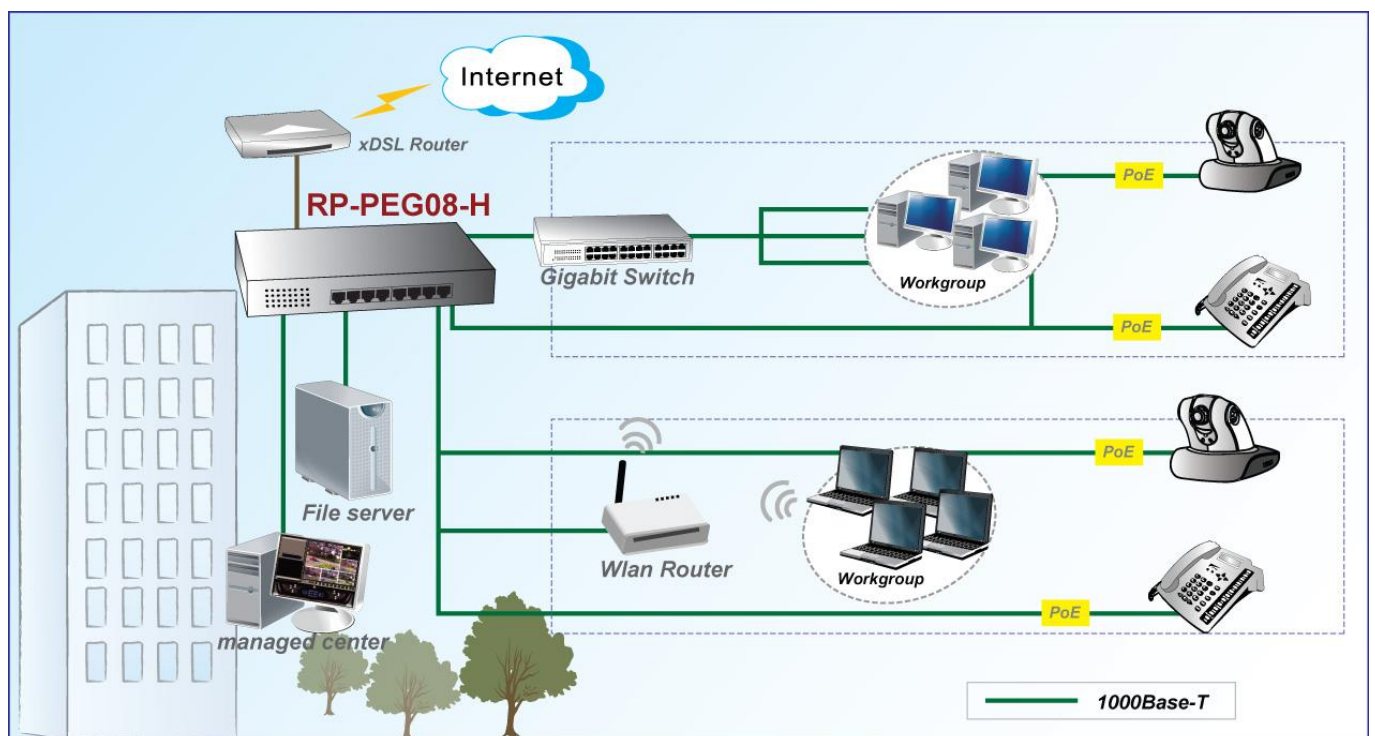
Feature

- Per PoE port of up to 30watt
- IEEE 802.3at compliant with 2-event classification
- IEEE 802.3af backward compatible
- Supply suitable power to PoE PD terminals
- Safe and reliable power to WLAN APs
- Automatic Detection and Protection of Non-standard Ethernet Terminals
- Supports 10/100/1000Base-T applications
- Compact design
- AC-in Internal Power

Specification

Standards	<ul style="list-style-type: none"> • IEEE 802.3 10 BASE-T • IEEE 802.3u 100 BASE-TX • IEEE 802.3ab 1000Base-T • IEEE 802.3at/af Power Over Ethernet
Interface	<ul style="list-style-type: none"> • 8* 10/100/1000Mbps RJ-45 ports
Filtering/Forwarding Rates	<ul style="list-style-type: none"> • 1000Mbps port - 1,488,000pps • 100Mbps port - 148,800pps • 10Mbps port - 14,880pps
Transmission Media	<ul style="list-style-type: none"> • 10BaseT Cat. 3, 4, 5 UTP/STP • 100BaseTX Cat. 5 UTP/STP • 1000BaseTX Cat. 5E/6/7 UTP/STP
PoE Specification	<ul style="list-style-type: none"> • PD classification identify • PoE over current protection • PoE circuit sorting protection • PoE power on RJ-45 pin 1,2 for power + / pin 3,6 for power -
LED Indicators	<ul style="list-style-type: none"> • Power, 10/100,1000, Link/Act, PoE (Green)
PoE Power Budget	<ul style="list-style-type: none"> • Per PoE port 30 W • Max. 120W for RP-PEG08 • Max. 250W for RP-PEG08-H • Max. 120W for RP-PEG08
Power Supply	<ul style="list-style-type: none"> • Internal Power Adapter 100~240VAC, 50/60 Hz
Environment	<ul style="list-style-type: none"> • Operating temperature : -10°C to 45°C • Operating Humidity:10% to 90% (Non-Condensing)
Dimension	<ul style="list-style-type: none"> • 280 * 185 * 44mm
Certification	<ul style="list-style-type: none"> • FCC, CE, LVD

Application



Ordering information

RP-PEG08-H 8-P Gigabit Ethernet PoE+ Switch (250W)

RP-PEG08 8-P Gigabit Ethernet PoE+ Switch (120W)