

RP-PE1600 | RP-PE1600H

16-P Fast Ethernet PoE+ Switch



RP-PE1600 series features a 16-ports 10/100Mbps Fast Ethernet Switch with IEEE 802.3at/af Power over Ethernet interfaces. It supports MDI / MDI-X function on all

10/100Mbps ports and provides Power injection on each LAN port which compliants with IEEE 802.3af (15W) or 802.3at (30W) PoE powered devices.

With N-way auto-negotiation, each port can automatically sense if the connected network devices are running at 10Mbps or 100Mbps and Half/Full-Duplex mode, and thus adjust accordingly. All the ports support wire-speed in full-duplex mode by using non-blocking 3.2Gbps switching backplane. With the store and forward features, it maximizes network performance and allows running network smoothly.

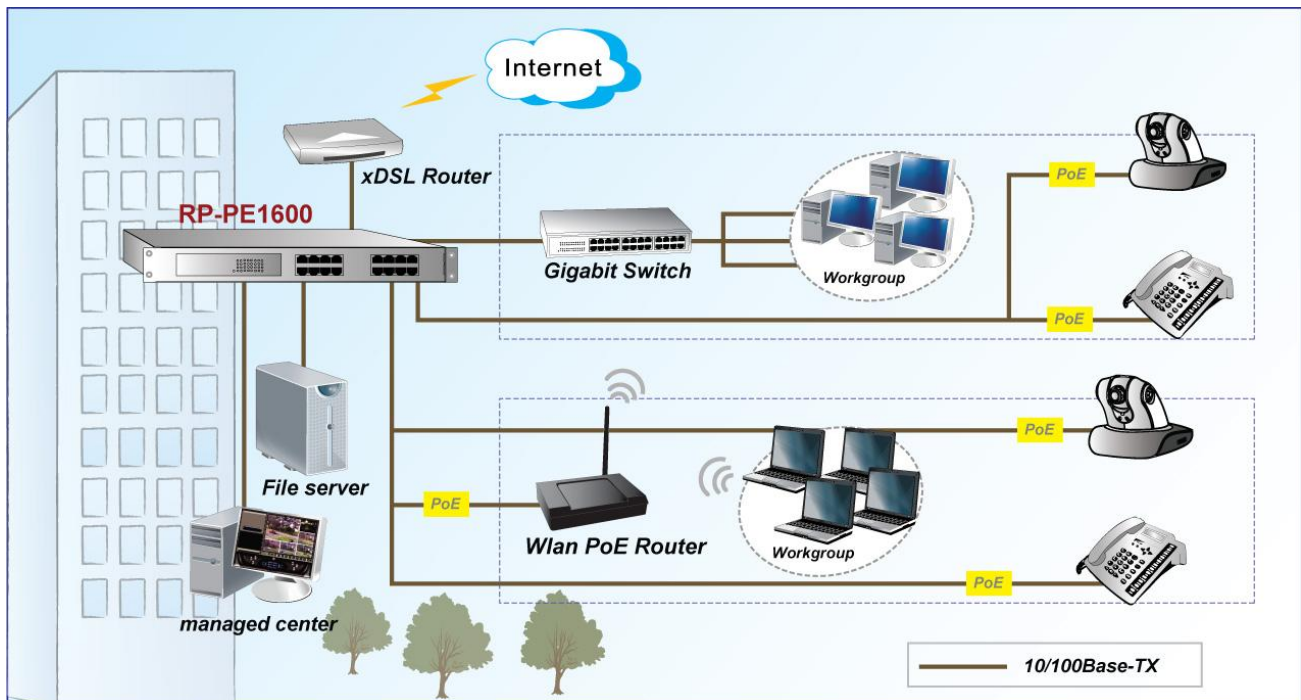
Feature

- 16-Port 10/100Mbps Fast Ethernet Switch with 16-port / 8-port Power over Ethernet (PoE) function
- Complies with IEEE 802.3af / 802.3at PoE standards
- Auto-MDI / MDI-X detection on each RJ-45 port
- Support 10/100Mbps N-way auto-negotiation
- 4K MAC address table, automatic source address learning and aging
- 19-inch rack mount size with holder
- Internal full-range power supply suitable for worldwide use

Specification

Standards	<ul style="list-style-type: none"> • IEEE 802.3 10 BASE-T • IEEE 802.3u 100 BASE-TX • IEEE 802.3x Full-duplex Flow control • IEEE 802.3at/af Power Over Ethernet
Interface	<ul style="list-style-type: none"> • 8* 10/100Mbps RJ-45 ports
Transmission method	<ul style="list-style-type: none"> • Store-and-Forward
Throughput	<ul style="list-style-type: none"> • 2.38Mpps (packet per second)
Switch fabric	<ul style="list-style-type: none"> • 3.2Gbps
MAC Table	<ul style="list-style-type: none"> • 4K entries
Flow Control	<ul style="list-style-type: none"> • Back pressure for half duplex • IEEE 802.3x Pause Frame for full duplex
PoE specification	<ul style="list-style-type: none"> • 16-port with PoE injector function • PoE Power Output Per Port 48V DC, Max. 15.4 watts (802.3af) or 30 watts (802.3at) • Power Pin Assignment 1/2(+), 3/6(-) • PoE Power Supply Type: End-Span
PoE Power Budget	<ul style="list-style-type: none"> • Max. 120 watts (RP-PE1600) • Max. 250 watts (RP-PE1600H)
Power Supply	<ul style="list-style-type: none"> • Internal Power Adapter 100~240VAC, 50/60 Hz
Environment	<ul style="list-style-type: none"> • Operating temperature: 0°C to 50°C • Operating Humidity: 5% to 90% (Non-Condensing)
Dimension	<ul style="list-style-type: none"> • 480 * 200 * 44 mm
Certification	<ul style="list-style-type: none"> • FCC, CE, LVD

Application



Ordering information

RP-PE1600	16-P Fast Ethernet PoE+ Switch (120W)
RP-PE1600H	16-P Fast Ethernet PoE+ Switch (250W)

REPOTEC CO., LTD.

3F., No.258, Liancheng Rd., Zhonghe District., New Taipei City 235, Taiwan
 TEL: 886-2-8227-1888 FAX: 886-2-8227-1818