

RP-1705M/RP-1708M**RP-1705K/RP-1708K****5-P/8-P Fast Ethernet Switch**

The devices provide a network with five or eight new and independent bandwidths speed Nway ports with TP.

All of the ports support automatic MDI/MDIX crossover and Auto-negotiation function.

Besides, these ports detect the network speed and auto-negotiate between 10BASE-T and 100BASE-TX, as well as between full and half-duplex.

The devices is a Plug-n-Play Switch, each port can be plugged directly to a server, router, or switch using regular straight-through twisted-pair Ethernet cables, so no confusing configuration is needed.

The Switch offers user a friendly design with LED indicators per port which is located on top of the panel, and TP ports neatly placed along the front panel. To instantly add five/eight new bandwidths, or to upgrade the performance of any network.



RP-1705M/1708M



RP-1705K/1708K

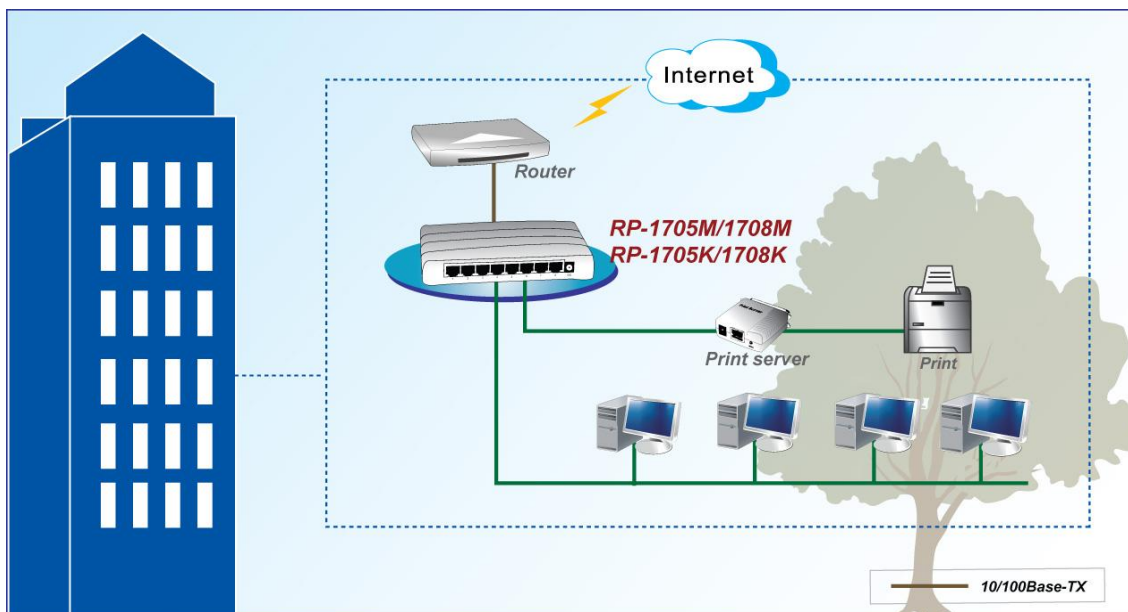
Feature

- 5/8 ports Switched ports with Auto-negotiation function
- Full wire speed "Store-and-Forward" technology instantly eliminates bad packets
- Filtering/Forwarding Rate: 148,800 packets/sec. per port Max
- IEEE 802.3x Flow Control support for Full Duplex operation
- Back-Pressure support for Half Duplex operation
- IEEE 802.3u and 802.3 standards comply
- Plug-n-Play with easy to read diagnostic LEDs
- 5/8 ports Auto MDI-X detects and corrects crossover cables

Specification

Standards	<ul style="list-style-type: none"> • 100Base-TX, IEEE 802.3u • 10Base-T, IEEE 802.3
Interface	<ul style="list-style-type: none"> • 5 * 100Base-TX/10Base-T • 8 * 100Base-TX/10Base-T
Media Support	<ul style="list-style-type: none"> • 100Base-TX: Cat.5 TP • 10Base-T: Cat.3, 4 or 5 TP
Data Transfer Rate	<ul style="list-style-type: none"> • 100Base-TX/10Base-T: 200/100/20/10Mbps, via Auto-Negotiation
Forwarding / Filtering Rate	<ul style="list-style-type: none"> • 148810 packets/second per port @ 100Mbps, Max • 14880 packets/second per port @ 10Mbps, Max
Duplex Modes	<ul style="list-style-type: none"> • All ports support Half Duplex and Full Duplex operation
Auto MDIX	<ul style="list-style-type: none"> • All ports support Auto MDI-X which can detect and corrects crossover cables
LED Indicators	<ul style="list-style-type: none"> • One for Power On/Off • Per port for Link/Activity
Cabinet	<ul style="list-style-type: none"> • Metal case: RP-1705M, RP-1708M • Plastic case: RP-1705K, RP-1708K
Power consumption	<ul style="list-style-type: none"> • 2.1W (5P) • 2.6W (8P)
Power Supply	<ul style="list-style-type: none"> • External Power Adapter DC 9V
Environment	<ul style="list-style-type: none"> • Operating Temperature: 0°C~45°C • Operating Humidity: 10%~90% (Non-Condensing)
Dimension	<ul style="list-style-type: none"> • 139 * 66 * 27mm (RP-1705M, RP-1708M) • 160 * 83 * 26mm (RP-1705K, RP-1708K)
Certification	<ul style="list-style-type: none"> • FCC, CE

Specification



Ordering information

RP- 1705M	5-P Fast Ethernet Switch (Metal case)
RP- 1708M	8-P Fast Ethernet Switch (Metal case)
RP- 1705K	5-P Fast Ethernet Switch(Plastic case)
RP- 1708K	8-P Fast Ethernet Switch(Plastic case)